

# YOUR PARTNER IN BUILDING COMMUNITIES

CCB ENVICO PTY LTD  
CAPABILITY STATEMENT



## **OUTLINE**

Who we are

Partner

Clients

Global Footprint

Capabilities

Services

Relevant experience

Why CCB Envico

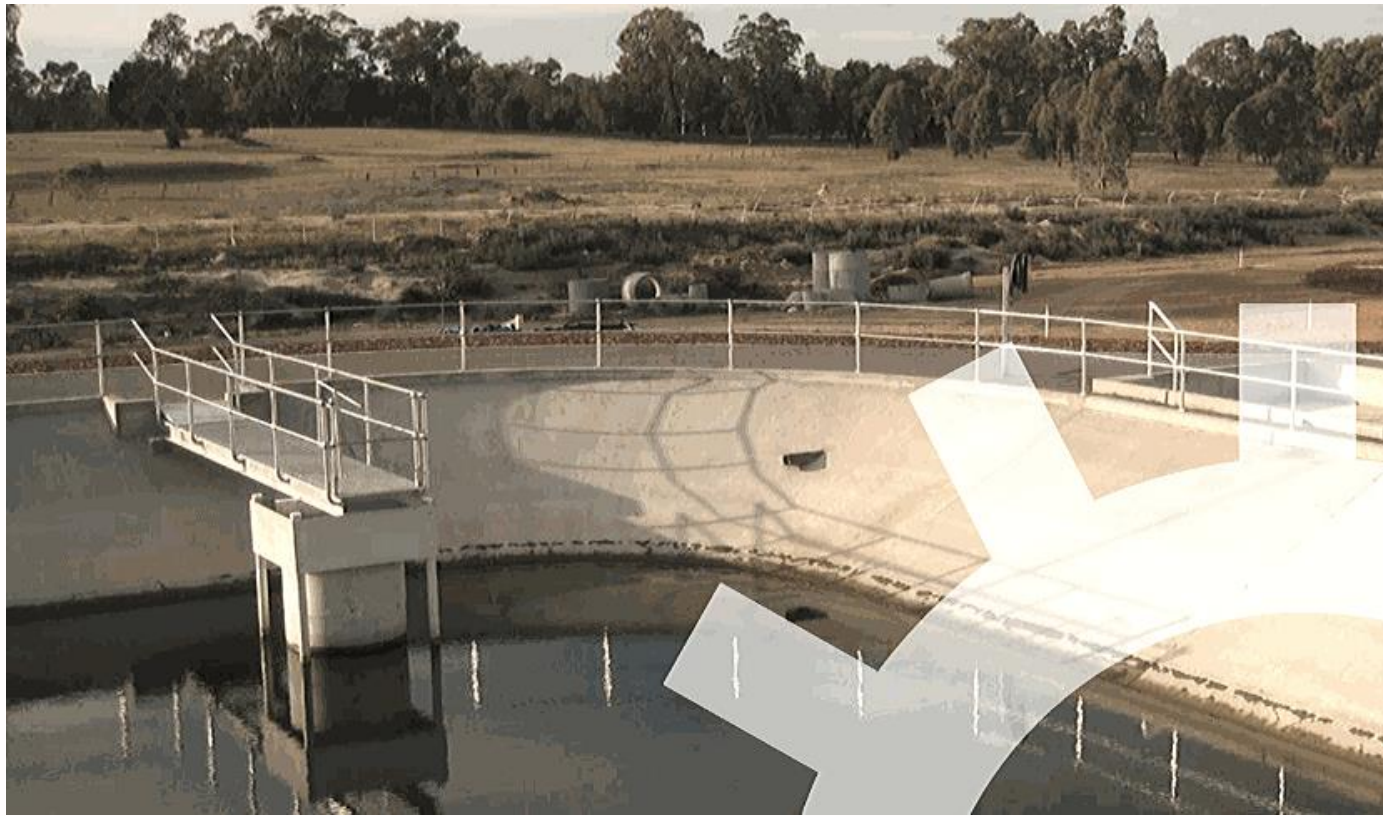
## WHO WE ARE



CCB Envico has been operating for almost 20 years as a specialist contractor engaged in the design, construction and commission of environmental infrastructure and facilities.

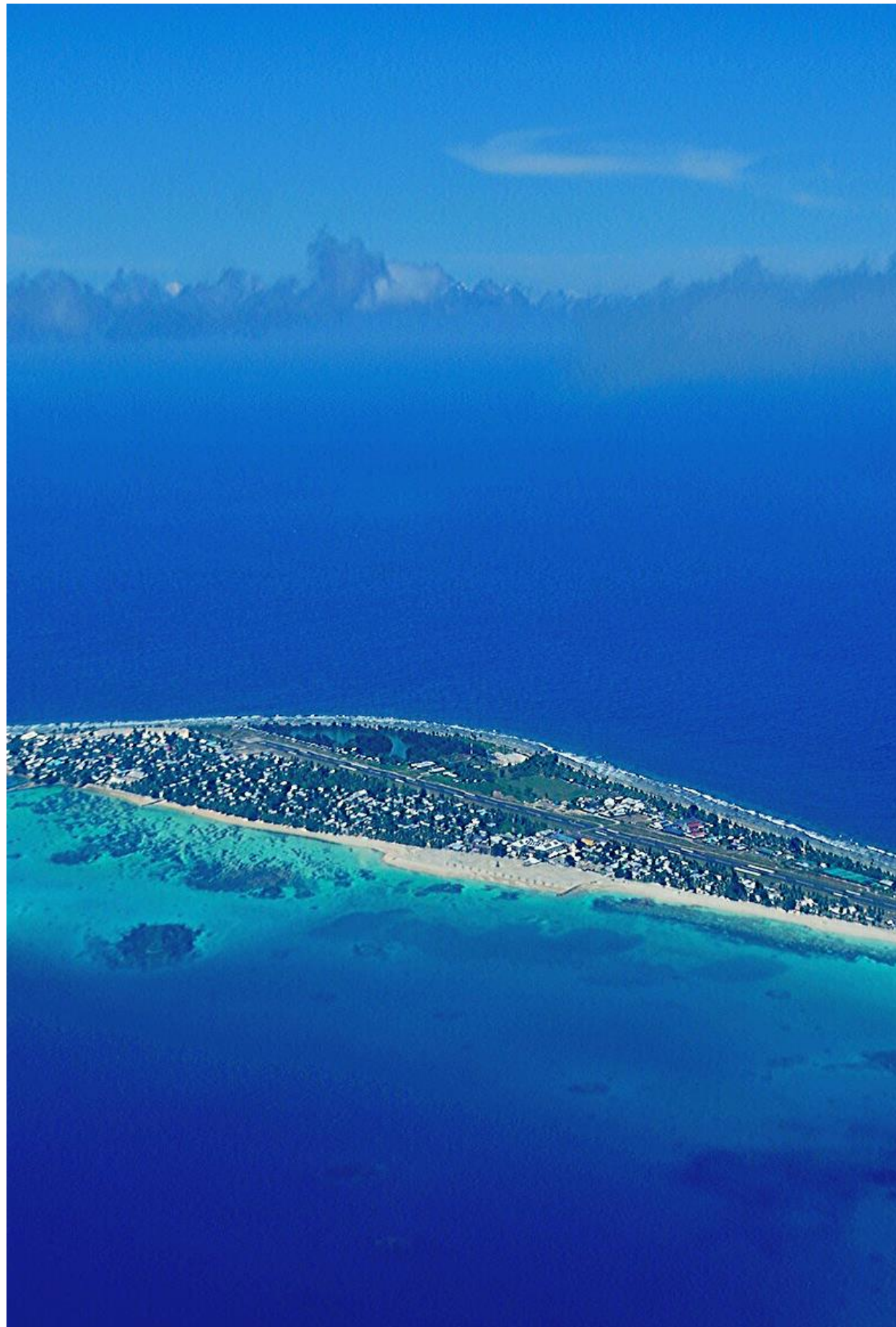
02

## WHO WE ARE



Formed with a core focus on **water and wastewater infrastructure** as well as **civil and manufacturing infrastructure and facilities**, CCB Envico has now diversified our operations and specialises in three sectors of the construction industry:

- Water Industry/Process Engineering
- Commercial/Facilities/Restoration
- Construction & Infrastructure Aid Work in Developing Countries – with our sister company Reeves International Pty Ltd

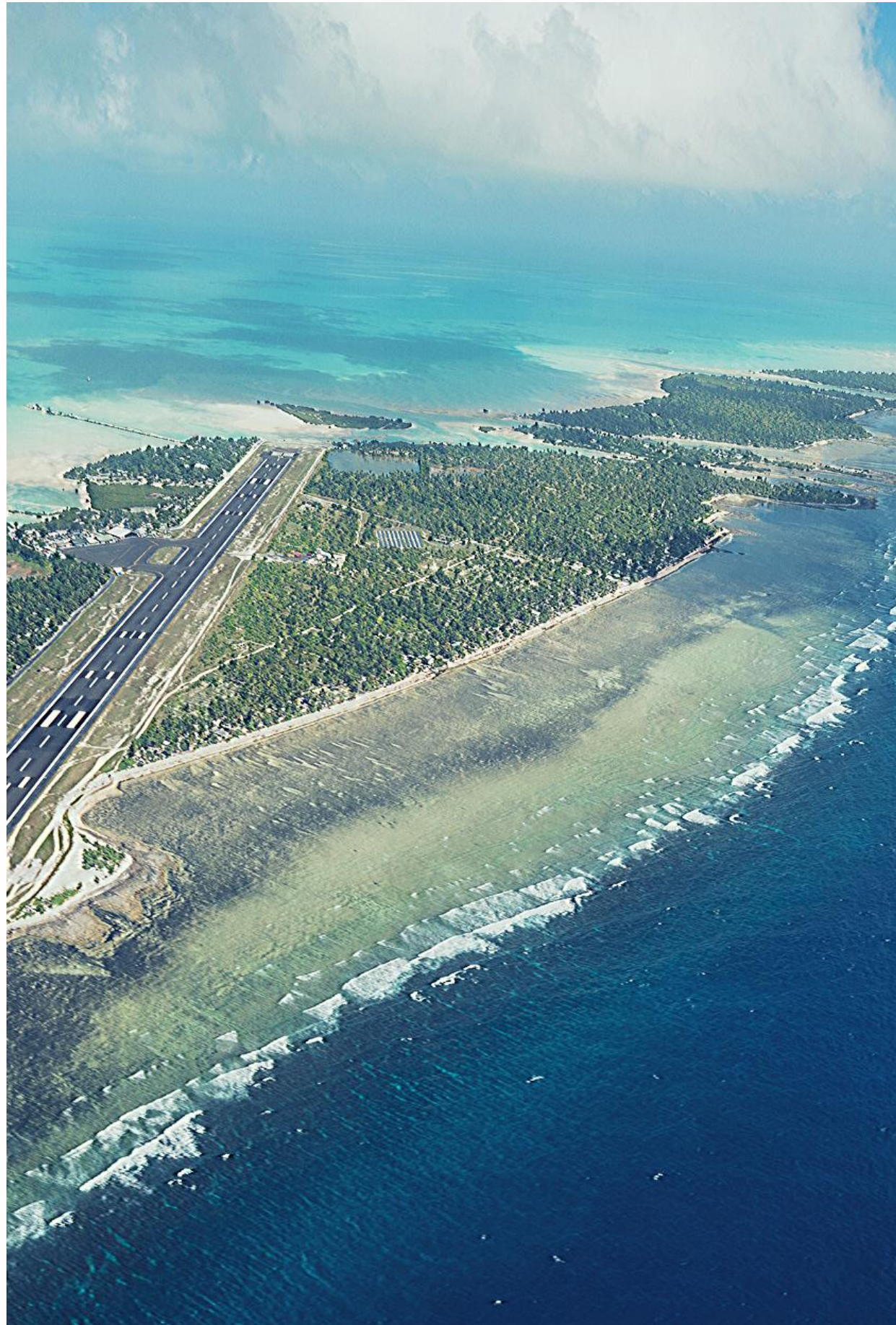


## REEVES ENVICO

CCB Envico is also a part of the Reeves Envico group, which has 40 years of experience working across the Pacific on Built Infrastructure.

Through our sister company, **Reeves International Pty Ltd**, CCB Envico has carried out projects in Solomon Islands, Kiribati, Samoa, Vanuatu, Nauru and Papua New Guinea add to extensive experience delivering complex design and construction projects for host nation governments, the World Bank and the Asian Development Bank.

OUR PARTNER



# REEVES INTERNATIONAL

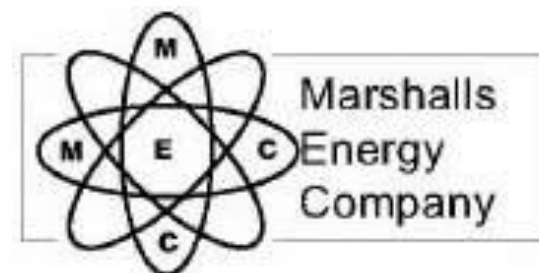
Reeves International (Reeves) is a construction company. It has successfully delivered **Overseas Development Assistance infrastructure projects in the Asia and Pacific region for the past thirty years** including a wide range of projects in the education, health, justice and government sectors.

We are specialists in delivering projects where operating conditions may include a fledgling construction sector, difficult and remote locations.

04

Clients include (but are not limited) to the following organisations

CLIENTS



# INTERNATIONAL FOOTPRINT



CCB has completed over 90 water infrastructure and commercial construction projects in over a decade of operation throughout Australia.



**WATER AND  
WASTEWATER**



**ENVIRONMENTAL  
PROJECTS**



**COMMERCIAL  
BUILDINGS**

CAPABILITIES



**PUBLIC  
WORKS**



**EDUCATION**



**HERITAGE  
BUILDINGS**

**CAPABILITIES**

# 08



## SERVICES

### **CONSTRUCTION**

Construction management, lump sum construction services and integrated project, construction management services, advise on buildability and construction programming and staging.

### **PROJECT MANAGEMENT**

Effective project management of a diverse range of capital projects utilising a range of procurement models

### **DESIGN AND SUPERVISION**

09

RELEVANT EXPERIENCE IN WATER

# PROJECT EXPERIENCE

Project Components							Project	Value	Description	Date Start	Date Complete	Consultant
Operational Water & Sewerage Treatment Plants	Aeration and/or Filtration	Pumping Stations & Water Retaining Structures	Inlet Works & Screening	Sludge Handling	SCADA	Design & Construct						
✓		✓					Erskine Street Dubbo Rising Main	\$5.6m	Upgrade and replace the Erskine Street Sewage Pumping Station. Works involve demolition of the current, and construction of new reinforced concrete wet well (6m diameter, 12m deep) which will house 3 pump sets and all the necessary pipe works, valves, odour control unit and access metalwork. In addition to this are several 8m deep maintenance holes, a large Emergency Storage Tank (12m diameter, 11m deep) and a new rising main pressure pipeline – comprising of 1.3km of GRP pipework and directional boring underneath two railway crossings.	June-16	Jan-18	
✓	✓	✓	✓	✓	✓	✓	Surbiton Park RWP Biosolids Facility Upgrade	\$8m	Surbiton Park RWP activated sludge plant comprises primary and secondary treatment servicing a population of 63,700 with an (ADWF) of 12.05 ML/day. Treated effluent is primarily used for the irrigation of surrounding agricultural land. Growth estimates necessitate a \$8m D&C Biosolids upgrade by CCB Envico including a new insitu concrete 5kpa mesophilic anaerobic digester (liquid working volume of 3,200 m3) and attendant processes	Jul-16	Jun-18	GHD (Concept only)
✓	✓	✓	✓	✓	✓	✓	Dubbo STP Major Upgrade	\$22.4M	Augmentation and expansion of an existing WWTP which includes inlet works, chemical dosing, IDEA tanks, disinfection system and enlarging the existing sludge lagoons.	Jun-14	Jun-16	NSW Public Works - David Watson
✓	✓	✓	✓	✓	✓	✓	Wallan STP Upgrade	\$16.5M	Augmentation and expansion of an existing WWTP which includes inlet works, chemical dosing, IDEA tanks, disinfection system and enlarging the existing sludge lagoons.	Mar-15	Jun-16	Jacobs - Hendry Young

Project components							Project	Value	Description	Date Start	Date Complete	Consultant
Operational Water & Sewerage Treatment Plants	Aeration and/or Filtration	Pumping Stations & Water Retaining Structures	Inlet Works & Screening	Sludge Handling	SCADA	Design & Construct						
✓	✓	✓	✓	✓		✓	Shoalhaven Heads WWTP	\$12.5M	Augmentation and expansion of an existing WWTP which includes inlet works, chemical dosing, IDEA tanks, disinfection system and enlarging the existing sludge lagoons.		Apr-12	Cardno - Brad Elliott
		✓	✓		✓	✓	Rehabilitation of the Colombo Waste Water Treatment Pump Stations	\$8.26M	Rehabilitation of 6 pump stations including the design, construction and commissioning and handover of a new preliminary treatment area and introduction of new pumps to pump sewage cater for the retention of grit and screenings	Aug-14	Oct-17	National Water Supply & Drainage Board: P: +94/112635 990
✓	✓	✓	✓	✓		✓	Mulwala Waste Water Treatment Plant	\$9.2M	A complete replacement of the waste water treatment plant including IDEA tank, inlet structure, sludge lagoons and chemical dosing etc.	Jun-07	Aug-08	Department of Commerce – Waste Water Services - Roy Bergseng
✓	✓	✓	✓	✓	✓	✓	Pohnpei STP	USD\$7m	D&C upgrade and expansion of 5.1 ML/D STP in the Federated States of Micronesia including two aeration tanks each with a central clarifier and outfall hypochlorite dosing plus separate sludge digester. The project also incorporated works to the ocean and refurbishment of 8 pump stations with new submersible pumps and power configurations.		Jul-15	CCB Envico with Laurie Curran Water
✓	✓	✓	✓	✓	✓	✓	Weno WWTP Rehabilitation	USD\$4m	D&C WWTP including refurbishment and augmentation of pumping and aeration capacity at the WWTP, refurbishment of the existing aeration/digester tank; construction of drying beds and installation of facilities for the disinfection of the effluent		Feb-16	CCB Envico with Laurie Curran Water

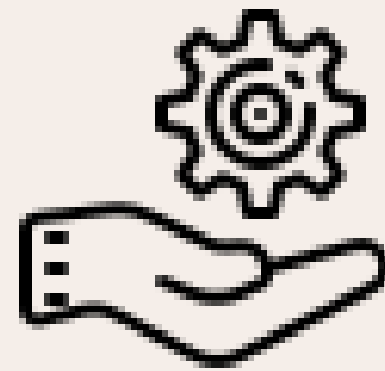
Project Components							Project	Value	Description	Date Start	Date Complete	Consultant
Operational Water & Sewerage Treatment Plants	Aeration and/or Filtration	Pumping Stations & Water Retaining Structures	Inlet Works & Screening	Sludge Handling	SCADA	Design & Construct						
✓		✓	✓	✓	✓		Apollo Bay Flow Equalisation Tank	\$1.4M	This facility has been designed to assist Barwon Water deal with high influx of tourists during the holiday period at Apollo Bay and to deal with excessive inflow to the system during storm events. The structure has also been fitted out with submersible pump station and the system was integrated into the plant using a remote rack to the existing PLC. The plants pressure system was also upgraded as part of this work.		Dec-07	Earth Tech - K White
✓		✓	✓	✓	✓	✓	Goondiwindi STP Renewal	\$4.5m	D&C Inlet works, screens, grit removal, DAF filtration, UV disinfection, chemical dosing and storage at the Goondiwindi STP	May-13	Jun-14	Hunter H2O - Mark Dawson
✓		✓	✓	✓	✓		Coolum STP	\$4.5m	Construct only drum screen inlet works, reticulation rising mains, service water, filtration and renewal of a 1ml sludge tank for clear water storage.	Jul-13	Jun-14	CH2M Hill - Andrew Hill -P +61 7 3302 8739
✓		✓				✓	Ballarat North Class A Demonstration Plant	\$2.0M	Civil works for a Class A UF demonstration treatment plant including modifications to clarifiers and service pipe work.		Apr-09	Maunsell - AECOM - David Dickson
✓		✓	✓	✓		✓	Bendigo Biosolids Dewatering Equipment	\$2.1M	Construction of a new dewatering facility including new centrifuges and ancillary equipment and associated mechanical, structural and electrical works.		2008	Beca
✓		✓	✓			✓	Bendigo Inlet Structure WRP	\$1.5M	Upgrade of inlet works including installation of new filter screens, inlet works covers and ventilation, grit handling combined with an upgrade to plant PLC and switchboard modifications.		2008	Beca

# 10

## WHY CCB ENVICO?



Proven experience for delivery of significant projects across Australia and remote Pacific Islands over 40 years



Proven demonstrable back up service and operation support



Cost and time savings and surety of a successful delivery based on a demonstrated track record working in the localtion

THANK  
YOU

